

Submitting Your Field Day Results to the ARRL

June 2021

Congratulations on taking part in Field Day 2021, which was another unusual Field Day. This document outlines the procedures to get your scores in to the ARRL using their Webpage that accepts all the required information. You get automatic bonus points for using this website.

It is also possible to submit your score in other ways, notably by email or by snail mail, but most people find it easier to do everything at once. If you want to use one of these other methods, we can assist you with that, after those who want to use the website have done so.

In preparation, you will need to have this information handy:

A1) The call sign that was used to log contacts. (The “Call” field at the top of the N3FJP Settings / Setup display)

A2) Your Entry class, which is 1D for most participants. (The ARRL website has a straight forward multiple choice question for this info.)

Your number of participants at your station, and their call signs

A3) Your power source, which is one of these:
generator, commercial mains, battery, solar, other

Your power multiplier: 5 Watts or less = 5x 150 Watts or less = 2x over 150 Watts = 1x

A4) Claimed Bonus points. The possible bonus points are:

<input type="checkbox"/> 100% emergency power <i>i</i>	
<input type="checkbox"/> Media publicity <i>i</i>	Upload documentation: Choose File No file chosen
<input type="checkbox"/> Public location <i>i</i>	
<input type="checkbox"/> Public information table <i>i</i>	Upload documentation: Choose File No file chosen
<input type="checkbox"/> Formal message to ARRL SM/SEC <i>i</i>	Upload documentation: Choose File No file chosen
<input type="checkbox"/> W1AW Field Day message <i>i</i>	Upload documentation: Choose File No file chosen
<input type="checkbox"/> Formal messages handled <i>i</i> — No. <input type="text"/>	Upload documentation: Choose File No file chosen
<input type="checkbox"/> Satellite QSO (automatically determined)	
<input type="checkbox"/> Natural power QSOs completed <i>i</i>	Upload documentation: Choose File No file chosen
<input type="checkbox"/> Site visit by invited elected official <i>i</i>	
<input type="checkbox"/> Site visit by invited served agency official <i>i</i>	
<input type="checkbox"/> Educational activity <i>i</i>	
<input type="checkbox"/> Youth participation <i>i</i>	
Number of youth participants completing at least 1 QSO: <input type="text"/>	
Total number of youth participants: <input type="text"/>	
<input type="checkbox"/> GOTA bonus (automatically determined)	
<input type="checkbox"/> Submitted entry online (automatically determined)	
<input type="checkbox"/> Safety officer <i>i</i>	Upload documentation: Choose File No file chosen
<input type="checkbox"/> Social media <i>i</i>	

These are bonus points that you personally qualified for, not any that someone else in the club did the qualification work. The bonus for submitting results via the website is done automatically, and you don't need to claim it. The above chart is taken from the submission form, and there is a small green link, consisting of a green "i" in a green circle, and the end of the name of each bonus category. You can get more information by clicking on it in the form. I'll put this help information at the end of this document.

Personally I didn't get any bonus points, but I know a few others did. If you're submitting bonus points, you'll need to provide some sort of supporting documentation. That can be done by attaching a file to your ARRL submission, or by emailing it separately later.

A5) I'm assuming no one had any "Get On The Air" (GOTA) operators. If you did and you want help with your submission, contact Doug Elliott VA3DAE.

OK, that was the preparation phase. Now we move on to the parts done on your computer:

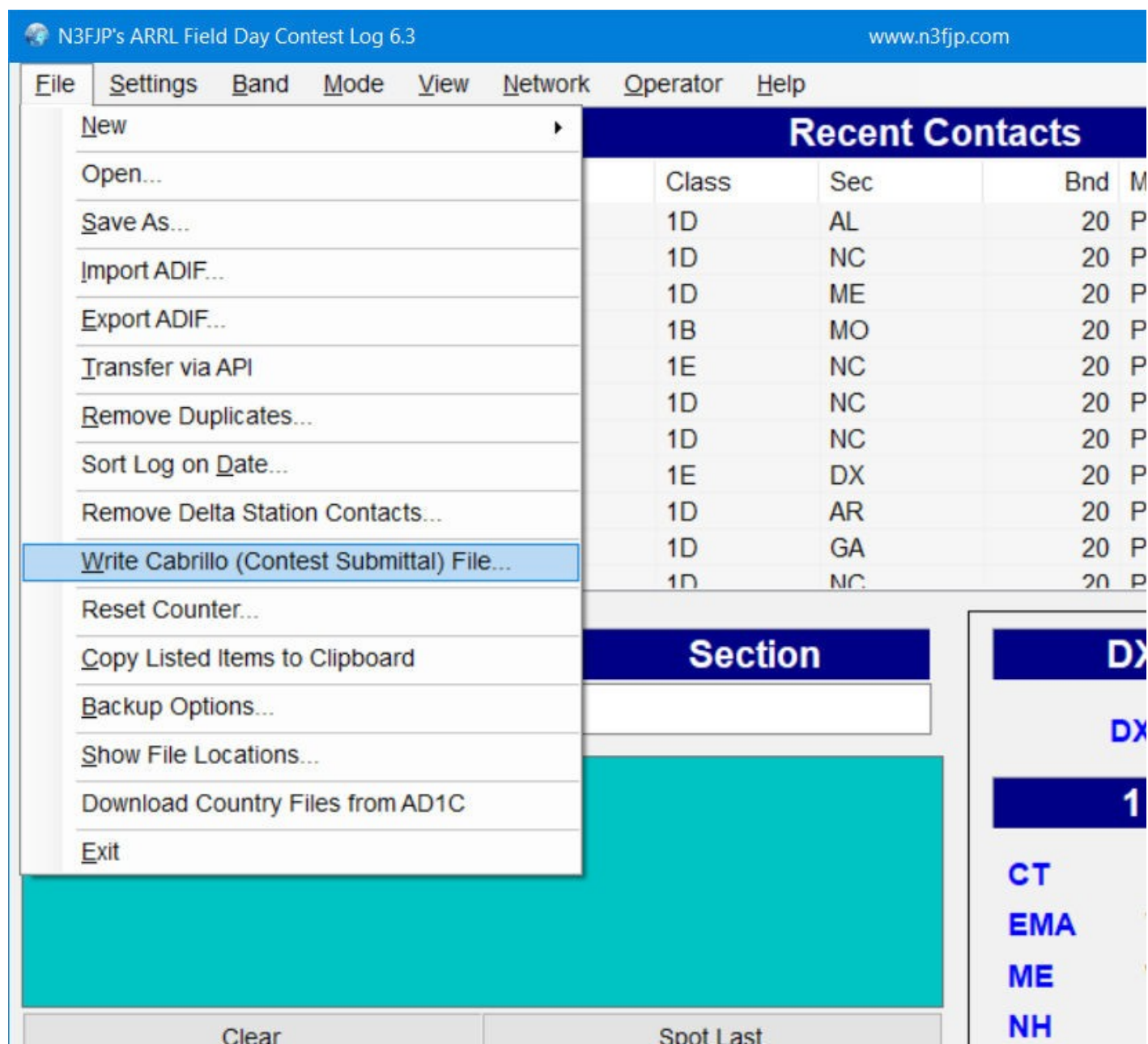
- extracting information from your N3FJP logging software
- filling in the ARRL Webpage

The instructions for this start on the next page. They're based on using a Windows computer, and the N3FJP Field Day version 6.6 software. They might work on a Mac or Linux machine, but I haven't done any testing of that. As far as I know, everyone was using the N3FJP logger, but if you used something else, a similar process will apply. If your logger can't generate a dupe file, a Cabrillo log can be used instead.

Deep breath, here we go...

1) Start up your N3FJP logging software

2) Click on "File" in top left corner. You may need to click it twice to get this menu:



3) Click on 10th menu entry: "Write Cabrillo (Contest Submittal) File..." to get this popup screen:

Field Day Summary Sheet Submittal Information

ARRL Field Day entries are now submitted on line. Please click the Write Dupe File button below and then click the next big green button immediately below to proceed. It is no longer necessary to fill out this form.

CLICK HERE To Calculate Band Totals and Submit On Line.

Club or Group Name

Number of Participants

☐ Check if you began setup prior to 18:00 Saturday

If Class B, List Calls of Ops

Power Source: ☐ Generator ☐ Battery ☐ Commercial Mains ☐ Solar ☐ Other (list)...

Maximum Power Output

☐ 5 Watts or Less ☒ 150 Watts or Less ☐ Over 150 Watts

Callsign of GOTA station (Class 2A and above)

List all calls of GOTA operators and # of QSOs

GOTA Bonus Pts

QSO Totals for GOTA Station ONLY CW: DIG: Phone:

Bonus Points:

☐ 100% Emergency Power ☐ W1AW Message ☐ Location in a Public Place

☐ Messages Relayed No: ☐ Media Publicity ☐ Satellite ☐ Information Booth

☐ Alternate Power ☐ Message to SM ☐ Site Visited by Govt Official

☐ Educational Activity ☐ Site Visited by Rep of Agency

☐ Summary submitted via www.b4h.net/cabforms ☐ Youth Participation No:

☐ Social Media ☐ Safety Officer

Total Bonus Points:

Name

Address Line 1

Address Line 2

Address Line 3

Address Line 4

Email

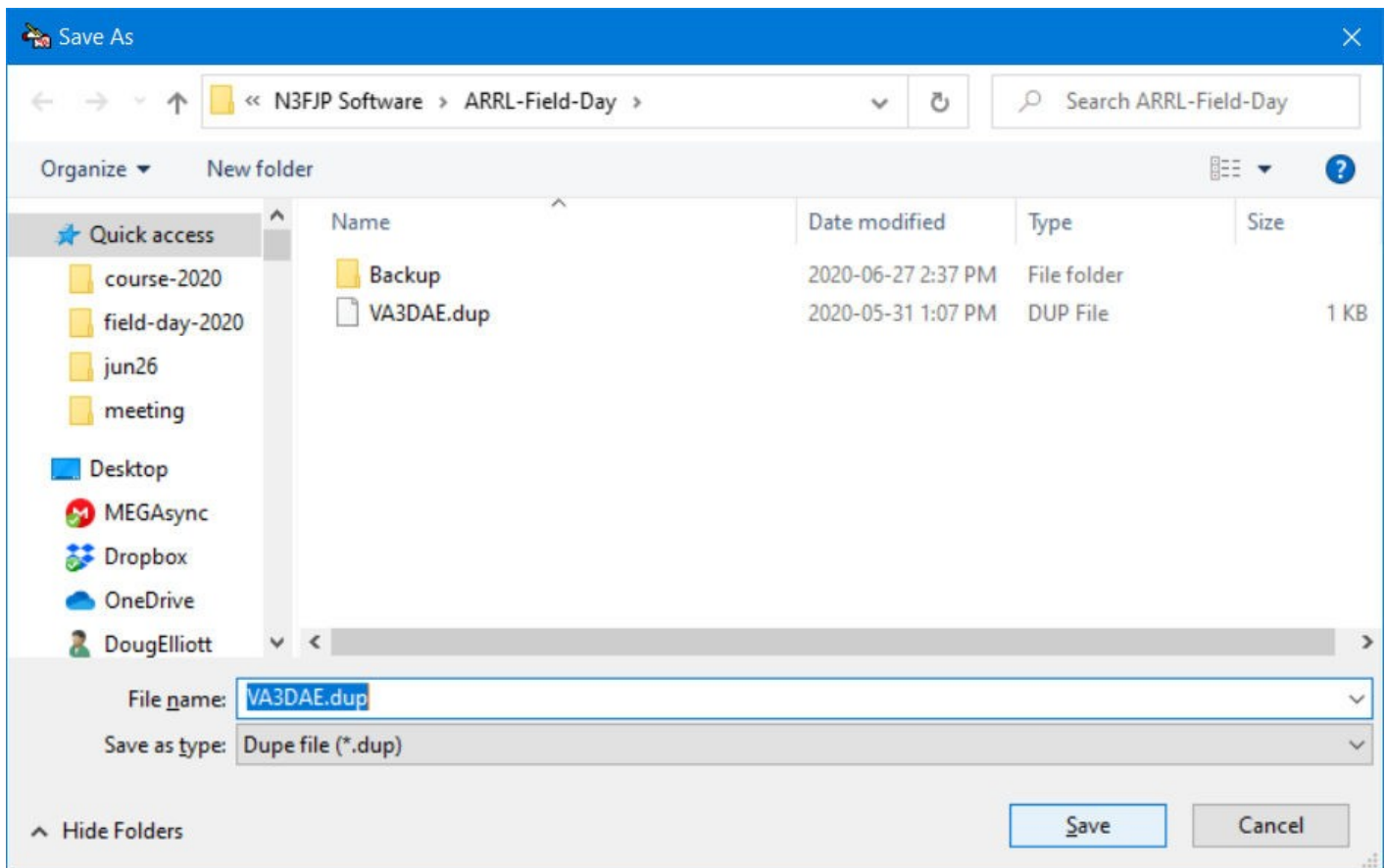
Write / View Summary File

Write Dupe File

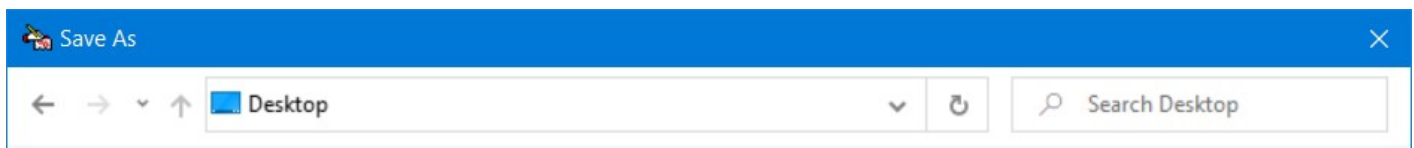
Write Cabrillo Log File

Done

4) Click on the green “Write Dupe File” button at the bottom, and get this display:

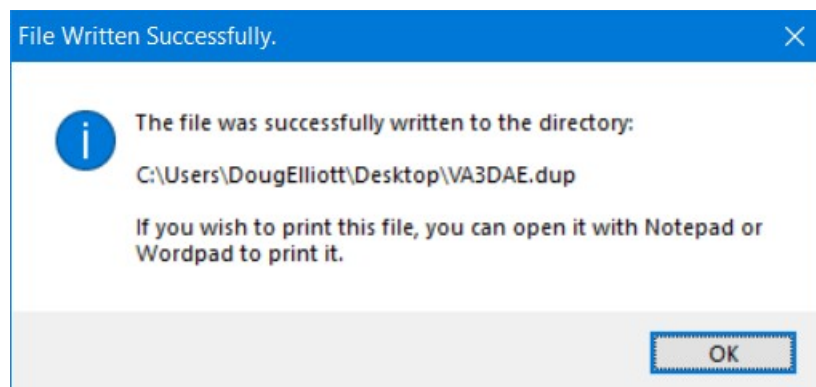


5) The File name will be **<your call sign>.dup** Leave that as is. On the left side of the screen, find “Desktop” and click on it. The top box in the display will change to this:

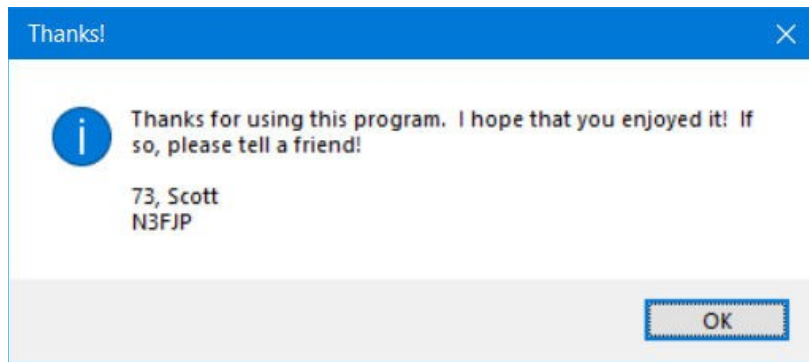


6) click on the Save Button near the bottom right corner

7) When an Information window appears telling you the file was written successfully, click OK.



8) Click OK again in the next Thank-you screen:



9) Back in the “Field Day Summary Sheet Submittal Information” screen, click on the large green button at the top containing the text: “**CLICK HERE To Calculate Band Totals and Submit On Line**”. You’ll see a display like this:

Field Day Summary								
Total Contacts by Band and Mode:								
Band	CW	Power	Dig	Power	Phone	Power	Total	%
----	--	-----	-----	-----	-----	-----	-----	---
20	0		0		392		392	96
15	0		0		5		5	1
10	0		0		10		10	2
---	--	-----	-----	-----	-----	-----	-----	---
Total	0		0		407		407	100

Remember to add any GOTA Station totals on the web form separately from these totals.

Click the link below to proceed to the on line submittal form.

Write down the number of contacts you made for each combination of band and mode. For most people, this will be one number. Because I worked 3 different bands, the example above shows 3 numbers:

20M - Phone: 392

15M - Phone: 5

10M - Phone: 10

Note that the total number will be different that the number of your last log entry if you had to delete any entries.


10) click the blue link in the bottom left corner of the screen that says:

<http://field-day.arrl.org/fdentry.php>

This will take you to the ARRL’s results submission webpage, which looks like this...:

Inbox (657) - canoe.eh@gmail x | Field Day Entry x | Field Day Entry x +

Not secure | field-day.arrl.org/fde... ☆



ARRL Home | Field Day Home | Field Day Resources | Field Day Locator | Rules | Entry Form | Entries Received | Results | Soapbox

2020 Field Day Entry - Introduction

To submit your entry for Field Day, you'll need both the data that describes your entry and any required bonus point documentation. Although the bonus point documentation can be submitted at a later time, it's recommended that you submit both at the same time.

Data Entry. You'll need all of the info that describes your entry:

- Call used and GOTA station call
- Entry class, number of participants, list of operators
- Power source and multiplier
- Claimed bonus points
- QSO totals by band and mode
- GOTA operators and QSO totals

Upload Documents. If you elect to upload required documents at this time, you'll need files for the following:

- Cabrillo log or list of stations worked by band/mode (dupe sheet)
- Required documentation for bonus points

[Go To Data Entry](#)

11) Click on the “Go To Data Entry” link at the bottom of the page. This brings up the page where you actually enter data. (Bet you thought we’d never get here.) There is help information supplied by the ARRL for the data fields at the end of this document. Here’s what the first part of the data entry page looks like....

ARRL FIELD DAY 2020

ARRL Home | Field Day Home | Field Day Resources | Field Day Locator | Rules | Entry Form | Entries Received | Results | Soapbox

2020 Field Day Entry

Complete this form to submit your Field Day Entry to the ARRL for review and tabulation. You can access a help page by clicking on (i) next to an item on the form. **Note:** You can select documentation files for upload as you complete this form, or you can upload the documents at a later time. Each document can not be larger than 6 MB.

Call Used (i) GOTA Station Call (i) Location (v)

Club or Group Name (i) (Type name to find and then select in existing list, or type complete name not on list.)

Number of Participants (i) Number of Transmitters in simultaneous operation (i)

Entry Class (check only one):

☐ A. Club or non-club group portable (i)

☐ B. 1 or 2 person non-club group portable (i) List of calls of operators:

☐ C. Mobile (i)

☐ D. Home station commercial power (i)

☐ E. Home station emergency power (i)

☐ F. EOC station (i)

Power Source (check all that apply):

☐ Generator ☐ Commercial mains ☐ Battery ☐ Solar ☐ Other (list)

Power Multiplier (check only one):

☐ 5 watts or less and battery powered = 5x

☐ 150 watts or less = 2x

☐ Over 150 watts = 1x

12) In the Call Used box, put the call sign used for logging contacts. See preparation A1. Example: VA3DAE

13) Leave GOTA Station Call blank

14) For Location (Select ARRL/RAC section), in the drop down box select Ontario South, which is near the bottom.

15) In the Club or Group Name box carefully enter: **London ARC**

It is very important that you type this exactly right because this is how the ARRL knows what scores to aggregate for our club. Do NOT abbreviate to LARC.

- 16) For Number of participants, enter the number of ham operators who operated at your site.
- 17) for number of Transmitters in simultaneous operation, enter the appropriate number, likely 1
- 18) For entry class, check the one that applies to you, likely D, but I believe we did have some B's and and E.
- 19) if you were a B station enter the operators call sign(s) where indicated.
- 20) Power source. Indicate what you used, Commercial mains for most of us.
- 21) Power multiplier. select the power rating of your most powerful transceiver
- 22) Bonus Points. select any that you qualified for. You can attach the supporting documentation right now, or email it in later. In some cases you need to fill in extra information.
- 23) Band/Mode QSO Breakdown. This is the information you wrote down from the blue summary screen produced by the N3FJP software. For most people, it's a single band/mode combination, and for that combination, you supply the QSO count, and the power you used. For me it's 3 bands, so on the...
- 20M line, under Phone, I have: 392 100 <<<<< Don't forget to include your power level
- 15M line, under Phone, I have: 5 100
- 10M line, under Phone, I have: 10 100
- 24) To the right of the Band/Mode chart is the place where you upload your dupe file. Click on "Choose File" and move the scroll bar on the left pane up to the top. Click on Desktop. In the right pane, now scroll downwards to find the file <your call sign>.dup . Click on it, and then click Open at the bottom of the screen. When you return to the ARRL website, your dupe file's name should now be filled in next to "Choose File"
- 25) GOTA Bonus. I'm assuming no one is claiming this.
- 26) Name, Call and E-mail Address are self explanatory.

At this point, nothing has gone to the ARRL yet. If you hit the "Submit Entry" button, all your information is forwarded. It looks like you get to confirm that you want to do this (not sure because I haven't got this far yet) and you can add comments if you wish. Be careful not to click "Clear Form" if you don't intend to - you'll have to re-enter everything if you do.

Hope these instructions are helpful. If you run into problems, please contact me and I'll do what I can to help you out.

73,
Doug Elliott VA3DAE
email: canoe.eh@gmail.com
cell / text: 519-630-8925

The ARRL help information for the submission form (2020 version) follows...

Field Day Entry Form Help

Call Used

The call sign used by your club/group/entry.

GOTA Station Call

The call sign used by your "get on the air" (GOTA) station. Leave the text box blank if you did not have a GOTA station. Applicable to Classes A and F.

Club or Group Name

The name of your club or group.

Number of Participants

Enter the number of persons who participated in your Field Day operation, including operators, loggers and set-up crew.

Number of Transmitters

Enter the maximum number of transmitters that were active during any 15-minute period of the Field Day event. Do not count the GOTA station operating under rule 4.1.1 and/or the extra VHF station operating under rule 4.1.2 in the transmitters total.

Entry Classes

Class A. Club or non-club group portable

4.1-4.2 Club or a non-club group of three or more persons set up specifically for Field Day. Such stations must be located in places that are not regular station locations and must not use facilities installed for permanent station use, or use any structure installed permanently for Field Day use. All equipment (including antennas) must lie within a circle whose diameter does not exceed 300 meters (1000 feet). To be listed as Class A, all contacts must be made with transmitter(s) and receiver(s) operating independent of commercial power mains. Entrants whom for any reason operate a transmitter or receiver from a commercial main for one or more contacts will be listed separately as Class A-Commercial.

Clubs or non-club groups of three or more persons set up specifically for Field Day and who make all contacts using an output power of 5 watts or less and a power source that is not commercial or motor-driven generator (e.g. batteries, solar cells, water-driven generator) will be classified as Class A-Battery.

Class B. 1 or 2 person non-club group portable

4.3-4.4 Club or non-club station set up and operated for Field Day purposes by no more than two persons. Other provisions are the same as for Class A. Class B stations using an output power of 5 watts or less and a power source other than commercial mains or motor-driven generator will be classified as Class B-Battery. Enter the call sign(s) of the operator(s) in the text box, separated by a space or comma.

Class C. Mobile

4.5 Stations in vehicles capable of operating while in motion and normally operated in this manner. This includes maritime and aeronautical mobile. If the Class C station is being powered from a car battery or alternator, it qualifies for emergency power but does not qualify for the multiplier of 5, as the alternator/battery system constitutes a motor-driven generating system.

Class D. Home station commercial power

4.6 Stations operating from permanent or licensed station locations using commercial power. For 2021 Class D stations may work all other Field Day stations, including other Class D stations, for points.

Class E. Home station emergency power

4.7 Same as Class D, but using emergency power for transmitters and receivers.

Class F. EOC Station

4.8 An amateur radio station at an established EOC activated by a club or non-club group. Stations may utilize equipment and antennas temporarily or permanently installed at the EOC for the event. For Field Day purposes, an Emergency Operations Center (EOC) is defined as a facility established by a Federal, State, County, City or other civil government, agency or administrative entity, or a chapter of a national or international served agency (such as Red Cross or Salvation Army) with which your group has an established operating arrangement.

Bonus Points

100% Emergency power

7.3.1 100 points per transmitter classification if all contacts are made only using an emergency power source (maximum 2,000 points). All transmitting equipment at the site must operate from a power source completely independent of the commercial power mains. Available to Class A, B, C, E and F.

Media Publicity

7.3.2 100 bonus points may be earned for attempting to obtain publicity from the local media. A copy of the press release, or a copy of the actual media publicity received (newspaper article, etc.) must be submitted to claim the points. Available to all classes.

Public Location

7.3.3 100 bonus points for physically locating the Field Day operation in a public place (shopping center, park, school campus, etc.). The intent is for amateur radio to be on display to the public. Available to classes A, B and F.

Public Information Table

7.3.4 100 bonus points for a Public Information Table at the Field Day site. The purpose is to make appropriate handouts and information available to the visiting public at the site. A copy of a visitor's log, copies of club handouts or photos is sufficient evidence for claiming this bonus. Available to Classes A, B and F.

Formal message to ARRL SM/SEC

7.3.5 100 bonus points for origination of a formal message to the ARRL Section Manager or Section Emergency Coordinator by your group from its site. You should include the club name, number of participants, Field Day location and number of ARES operators involved with your station. The message must be transmitted during the Field Day period and a fully serviced copy of it must be included in your submission, in standard ARRL radiogram, or no credit will be given. The message must leave or enter the Field Day operation via amateur radio RF. The Section Manager message is separate from the messages addressed in Rule 7.3.6 and may not be claimed for bonus points under that rule. Available to all classes.

W1AW Field Day Message

7.3.9 100 bonus points for copying the special Field Day bulletin transmitted by W1AW (or K6KPH) during its operating schedule during the Field Day weekend (listed in rules announcement). An accurate copy of the message is required to be included in your Field Day submission. (Note: The Field Day bulletin must be copied via amateur radio. It will not be included in Internet bulletins sent out from Headquarters and will not be posted to Internet BBS sites.) Available to all classes.

Formal messages handled

7.3.6 10 points for each formal message originated, relayed or received and delivered during the Field Day period, up to a maximum of 100 points (ten messages). Properly serviced copies of each message must be included with the Field Day report. The message to the ARRL SM or SEC under rule 7.3.5 may not be counted in the total of 10 for this bonus. Enter the total number of messages handled in the text box. All messages claimed for bonus points must leave or enter the Field Day operation via amateur radio RF. Available to all classes.

Natural power QSOs completed

7.3.8 100 bonus points for Field Day groups making a minimum of five QSOs without using power from commercial mains or a petroleum driven generator. This means an "alternate" energy source of power, such as solar, wind, methane or water. This includes batteries charged by natural means (not dry cells). The natural power transmitter counts as an additional transmitter. If you do not wish to increase your operating category, you should take one of your other transmitters off the air while the natural power transmitter is in operation. A separate list of natural power QSOs should be submitted with your entry. Available to Classes A, B, E and F.

Site Visit by invited elected official

7.3.11 A 100-point bonus may be claimed if your Field Day site is visited by an elected government official as the result of an invitation issued by your group. Available to all classes.

Site Visit by invited served agency official

7.3.12 A 100-point bonus may be claimed if your Field Day site is visited by a representative of an agency served by ARES in your local community (Red Cross, Salvation Army, local Emergency Management, law enforcement, etc.) as the result of an invitation issued by your group. Available to all classes.

Youth Participation

7.3.15 A 20-point bonus (maximum of 100) may be earned for each participant age 18 or younger at your Field Day operation that completes at least one QSO. Enter the number of youth participants who complete at least one QSO in the text box. For a 1-person Class B station, a 20-point bonus is earned if the operator is age 18 or younger. For a 2-person Class B station, a 20-point bonus is earned for each operator age 18 or younger (maximum of 40 points). This bonus does not allow the total number of participants in Class B to exceed 2. Enter the total number of participants (operators, loggers, set-up crew and visitors) 18 years or younger at your Field Day site in the text box. Available to all classes.

Educational Activity

7.3.10 One 100-point bonus may be claimed if your Field Day operation includes a specific educational-related activity. The activity can be diverse and must be

related to amateur radio. It must be some type of formal activity. It can be repeated frequently during the Field Day period but only one bonus is earned. Available to Classes A & F entries and available clubs or groups operating from a club station in class D and E with 3 or more participants.

Social Media

7.3.16 One 100-point bonus for promoting your Field Day activation to the general public via an active, recognized and utilized social media platform (Facebook, Twitter, Instagram, etc.)

Safety Officer

7.3.17 One 100-point bonus may be earned by having a person serving as a Safety Officer for those groups setting up Class A stations. This person must verify that all safety concerns on the Safety Check List (found in the ARRL Field Day Packet) have been adequately met.

Band/Mode QSO Breakdown

Enter the total number of QSOs completed for each band and mode combination. Combinations for which no QSOs were completed can be left blank. The maximum power (W) must be entered for any band/mode combination for which you claim QSOs. KW and 1K are recognized abbreviations for 1000 watts. Satellite total QSOs must be listed separately from the other QSOs and are broken down only by mode, not band. Do not enter GOTA station QSOs in this section.

Operators of the GOTA Station

In order to receive GOTA station bonus points, list the names, calls and QSOs for each GOTA station operator. 20 GOTA bonus points are awarded for each 20 QSOs completed by a GOTA operator, for a maximum of 100 GOTA bonus points per operator. No more than 500 GOTA bonus points may be earned. There is a 1000-QSO limit for the GOTA station. If you need to enter more than 10 operators, click on the Add a row button to add rows to the GOTA operators table.

GOTA Station Coach

Click on the check box if you had a GOTA Coach. GOTA station bonus points are doubled, to a maximum of 1000 points, if the GOTA station is supervised by a full-time GOTA Coach. The GOTA Coach supervises the operator of the station, doing such things as answering questions and talking them through contacts, but may not make QSOs or perform logging functions. To qualify for the doubled bonus points, the GOTA Coach must be present and supervising the GOTA station at all times it is operated.

Name/Call/Address

Enter the full name, call sign, e-mail address and mailing address of the club officer, authorized club representative or person authorized to submit this entry. A confirmation of the entry will be automatically sent to the provided e-mail address.